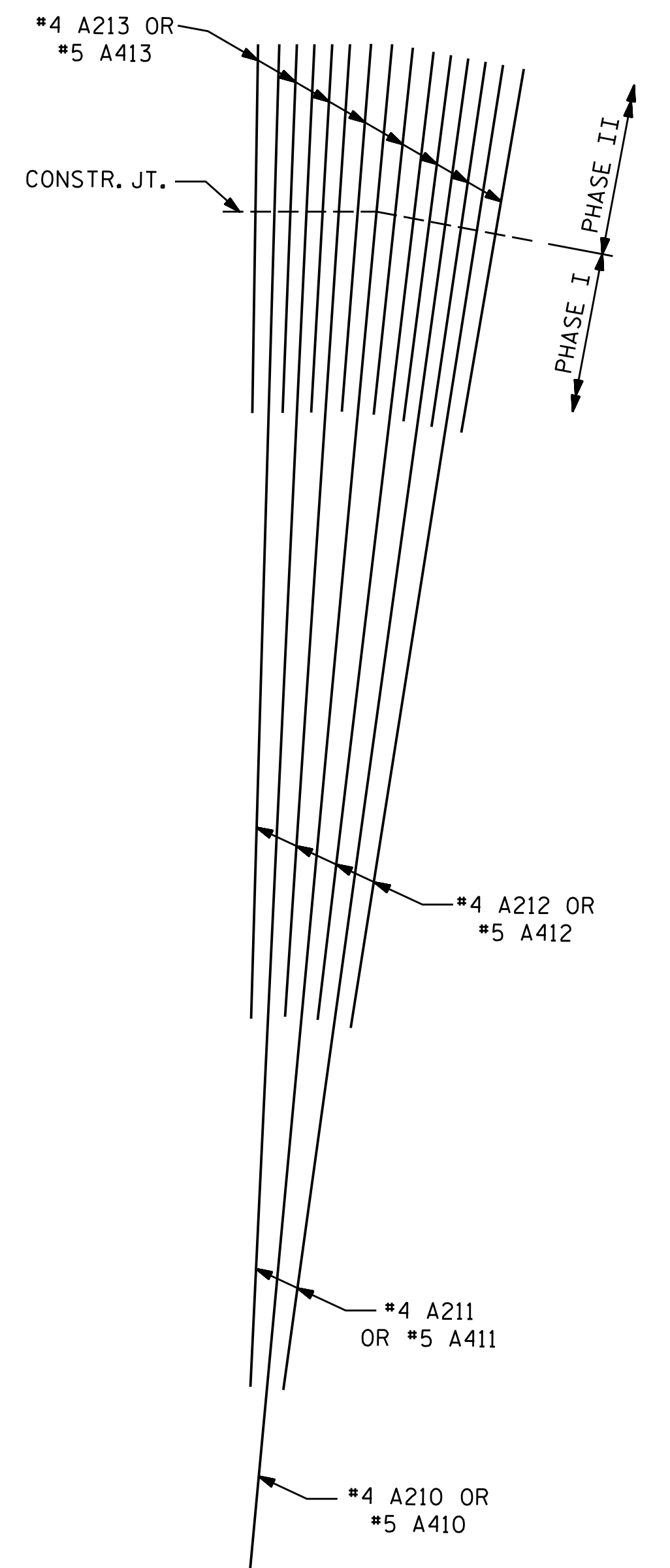
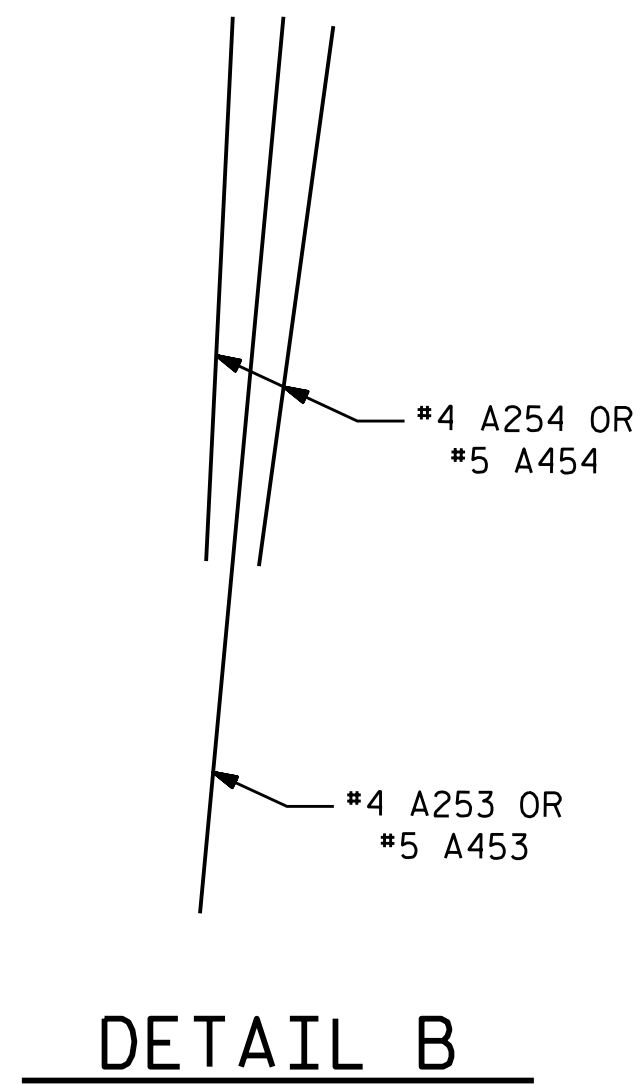


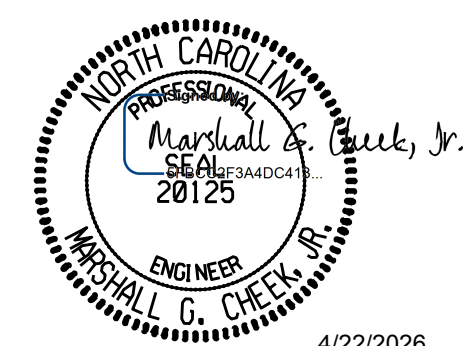
* SEE DETAIL 'A'
** SEE DETAIL 'B'



DETAIL A

PROJECT NO. HN-0031
TRANSYLVANIA COUNTY
STATION: 16+45.00 -L-

SHEET 9 OF 12



DOCUMENT NOT CONSIDERED FINAL
UNLESS ALL SIGNATURES COMPLETED

TGS ENGINEERS
201 W. MARION ST STE 200
SHELBY, NC 28150
PH (704) 476-0003
CORP. LICENSE NO.: C-0275

STATE OF NORTH CAROLINA
DEPARTMENT OF TRANSPORTATION
RALEIGH

TRIPLE 10 FT. X 8 FT.
CONCRETE BOX CULVERT
RIGHT EXTENSION

REVISIONS						SHEET NO.
NO.	BY:	DATE:	NO.	BY:	DATE:	
1			3			C-9
2			4			TOTAL SHEETS 12

ASSEMBLED BY : ZCS DATE : 1/26
CHECKED BY : MGC DATE : 2/26
DESIGN ENGINEER OF RECORD: ZCS DATE : 2/26

2/24/2026
c:\work\dir\ncdot-pw.bentley.com.ncdot-pw-01\zachary smith\d0363433\HN-0031-SMU-CU-87.dgn
Zsmith

PLAN OF FLOOR SLAB
FOR S1 IN FLOOR SLAB & WING FOOTINGS, SEE WING SHEETS.